

ZLSN3002

Serial to Ethernet Module

Copyright©2008 Shanghai Zorlan Information Technology Co., Ltd.

ZL DUI 20111218.1.0



DIRCTLY

1.	SUMMARY.....	3
1.1.	Characteristic of ZLSN3002	3
2.	PARAMETERS	4
3.	USE WEB TO COMFIT ZLSN3002.....	5
4.	USE VIRCOM WINDOWS UTILITY TO CONFIG.....	8
5.	CONTACT US	9

1. Summary

ZLSN3002 is a serial to Ethernet module. It can transparently convert serial data to TCP/IP data, and converts TCP/IP data to serial simultaneously. It has one serial port and one 10M/100M Ethernet port.

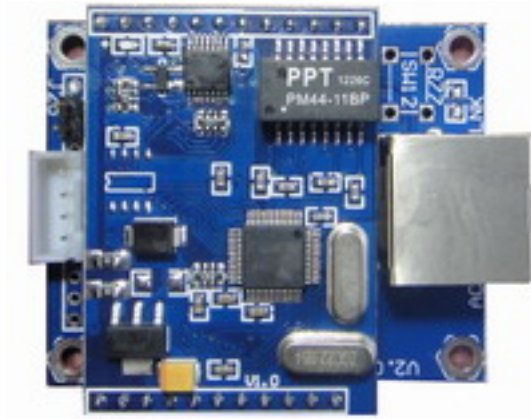


Figure 1 ZLSN3002

1.1. Characteristic of ZLSN3002

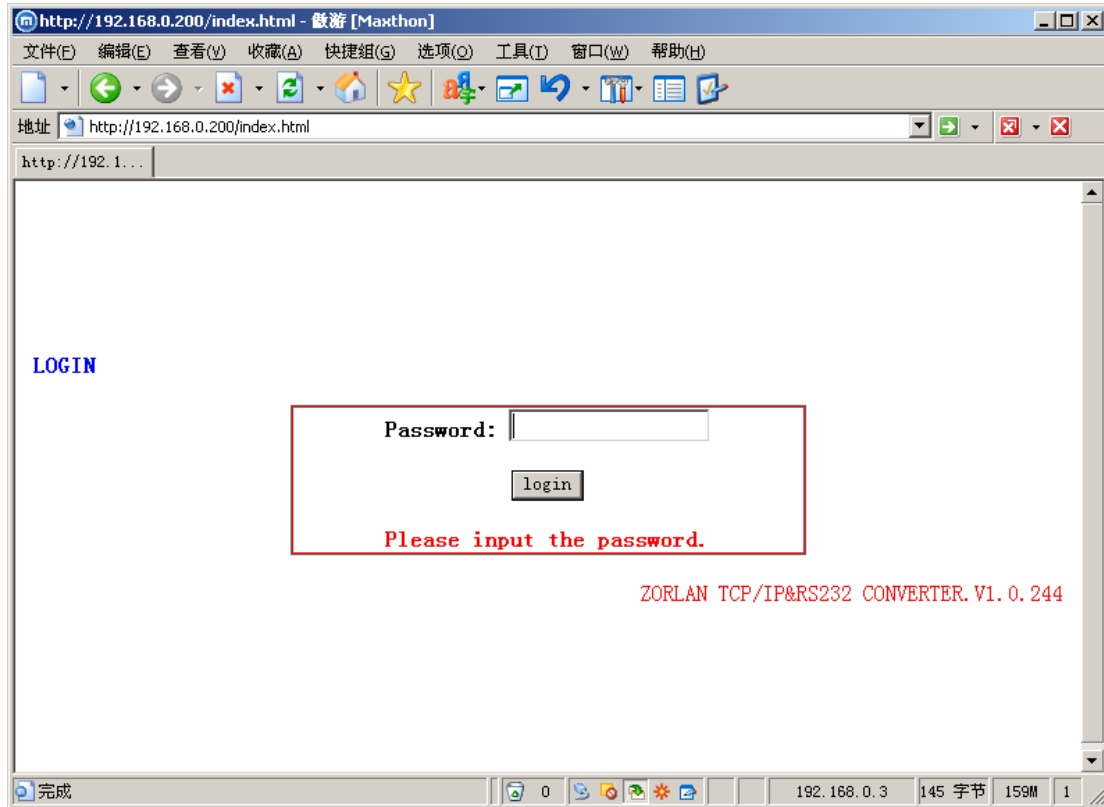
1. Full Duplex, high stability.
2. Low cost serial to Ethernet solution.
3. Support TCP Server, TCP Client, UDP mode, UDP Group; Support DHCP, DNS.
4. Serial baud rate: 1200 to 460800
5. 4 lines interface to user MCU. These are VCC (+5V or 3.3V selectable), GND, TXD and RXD. Here TXD and RXD are 3.3V TTL electrical power level, which can be directly connected to user's MCU UART pins.
6. Configure module through serial port command, Ethernet port by windows utility, Web Browser.
7. Provide Virtual serial port software ZLVircom.

2. Parameters

Figure		Protocol support	
Connecting type:	RJ45 and 4pins port	TCP, UDP ,HTTP, ARP, ICMP, DHCP, DNS	
Dimension:	43 x 53mm	Work mode	
Communication interface		TCP SERVER, TCP CLIENT, UDP, UDP Group	
Ethernet:	10/100Mbps	Power	
Serial:	TTL(5V or 3.3V selectable): RXD, TXD,CTS, RTS	Power:	DC5V($\pm 5\%$), less than 90mA
Serial parameters		Averment require	
Bound rate:	1200~460800bps	Temperature:	-45~85℃
Parity:	None, Odd, Even, Mark, Space	Storage:	-45~165℃
Data bits:	5-9		
Flow control:	RTS/CTS, DTR/DSR, NONE		

3. Use web to comfit ZLSN3002

Login:



Net parameters:

Tel:(021)64325189

Fax: 64325200

http://www.zlmcu.com

http://192.168.0.200/ip.html - 傲游 [Maxthon]

文件(F) 编辑(E) 查看(V) 收藏(A) 快捷组(G) 选项(O) 工具(T) 窗口(W) 帮助(H)

地址 http://192.168.0.200/ip.html

IP Paramters Setting

[IP Parameters](#)
[Serial Parameters](#)
[Modify Password](#)
logout

IP Mode: Static IP
IP Addr: 192.168.0.200
NetMask: 255.255.255.0
GateWay: 192.168.0.1
Work Mode: TCP Server
Local Port: 1024
Dest Mode: Dynamic
Dest Port: 1024
Dest IP: 192.168.0.3
Device Name: test_dev
SUBMIT

完成 192.168.0.3 0 字节 385M 1

Serial parameters:

http://192.168.0.200/serial.html - 傲游 [Maxthon]

文件(F) 编辑(E) 查看(V) 收藏(A) 快捷组(G) 选项(O) 工具(T) 窗口(W) 帮助(H)

地址 http://192.168.0.200/serial.html

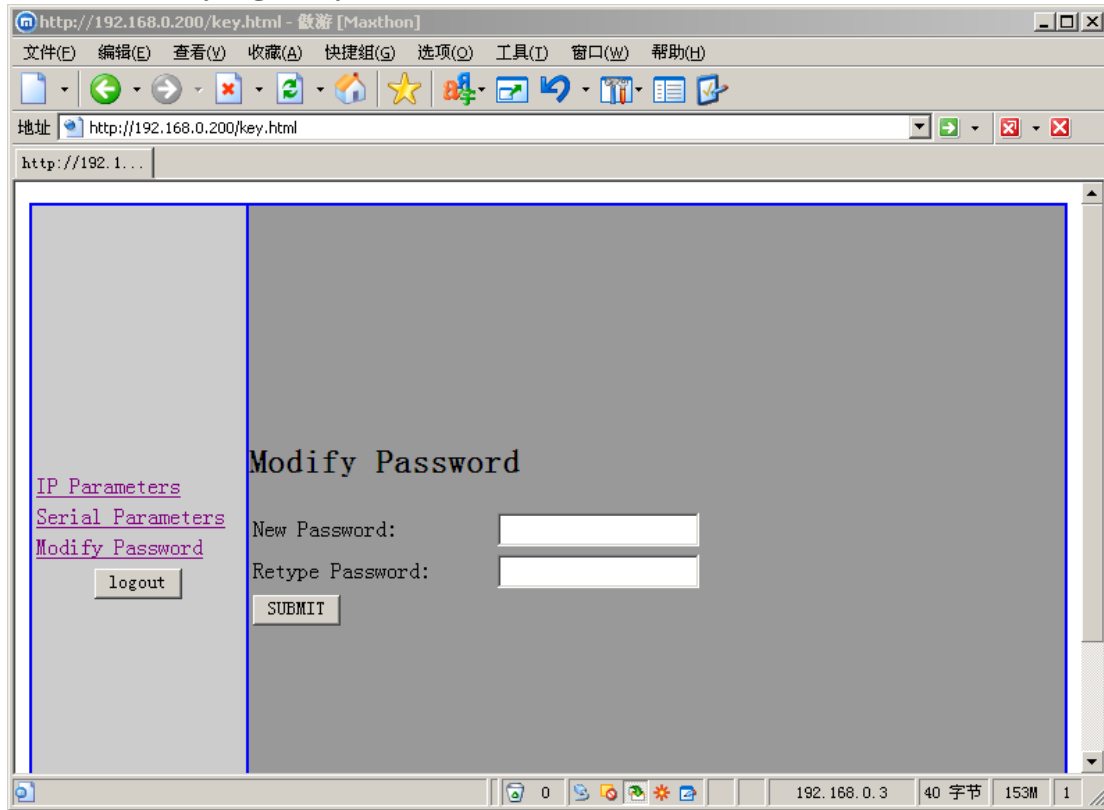
Serial Setting

[IP Parameters](#)
[Serial Parameters](#)
[Modify Password](#)
logout

Baudrate: 115200
Data Bits: 8
Parity: None
Stop bits: 1
Flow Control: None
Packing length: 1300 (byte)
Gap time: 255 (ms)
Frame Start Byte (Hex):0x
Frame End Byte (Hex):0x
SUBMIT

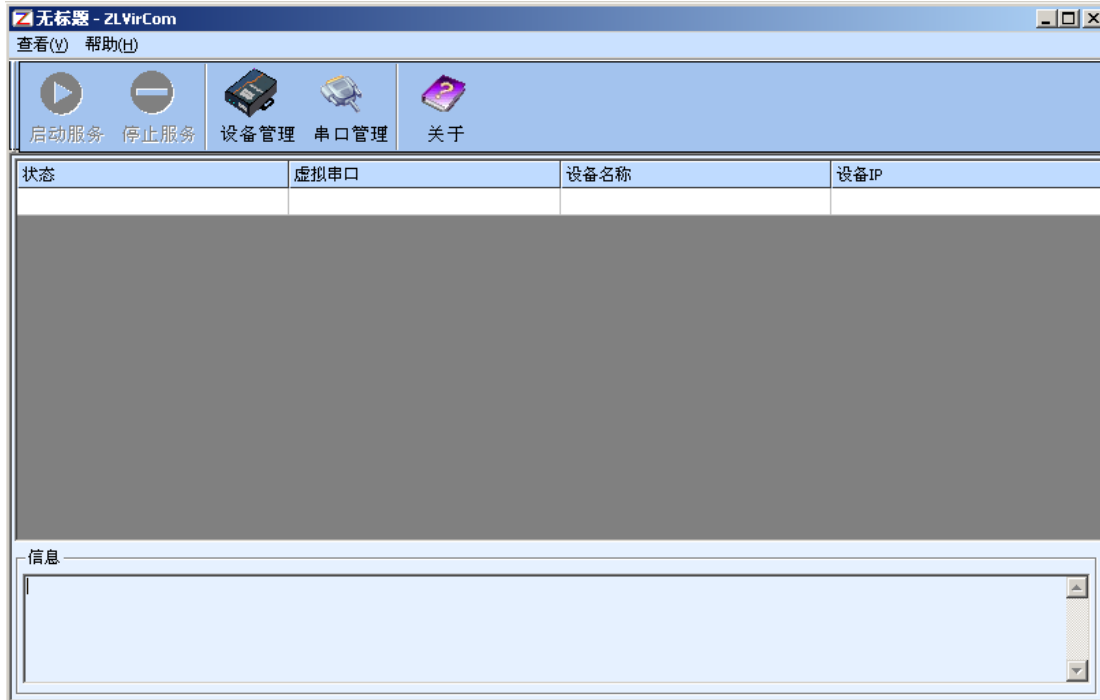
完成 192.168.0.3 0 字节 232M 1

Modify login key:

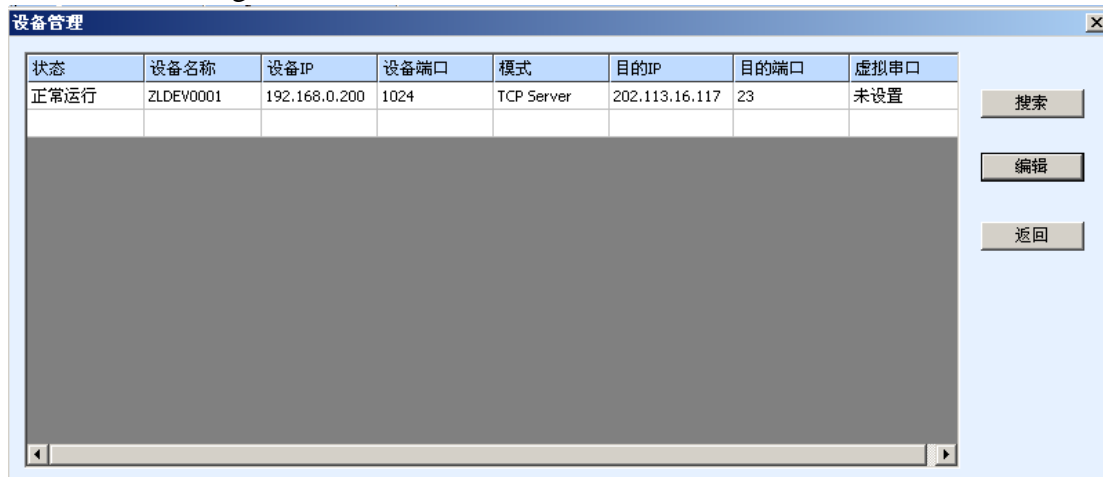


4. Use Vircom windows utility to config

1. Run VirCom:



Device management:



Parameter setting:

设备设置			
虚拟串口	不使用	设备名称	test_d11
串口设置		网络设置	
波特率	115200	IP模式	Static IP
校验方式	None	IP地址	192.168.0.200
数据位	8	子网掩码	255.255.255.0
停止位	1	网关IP	192.168.0.1
流控	None	工作模式	UDP
分包规则		本地端口	1025
最大包长	1300 (byte)	目的模式	Dynamic
最长间隔	255 (ms)	目的IP	192.168.0.3
帧首字符 0x	(Hex)	目的端口	5678
帧尾字符 0x	(Hex)		
		修改设置	取消

5. Contact us

Shanghai Zlan Information Technology Co.,Ltd

Address: 12 floor D building No. 80 CaoBao road Xuhui District Shanghai China

Phone: 021-64325189

Fax: 021-64325200

Website:<http://www.zlmcu.com>

Email: support@zlmcu.com